



The latest news and announcements

IN THIS ISSUE

A LOOK BACK AT 2020

As we reflect on the last months of 2020, we at the Cheltenham Education Partnership would like to express our gratitude and recognise all teachers, students and colleagues for facing up to so many challenges with such resilience and determination. Despite the March 2020 lockdown putting a temporary hold on CEP activities, everyone began the new academic year in September with great enthusiasm, embracing new ways of meeting and learning through virtual methods.

VOCES8 CONCERT AND Q&A

Term 2 saw a strong focus on supporting collaboration between a number of the schools' Heads of Departments, providing staff with the opportunity to share best practice and suggestions for managing challenges with teaching during the pandemic. The CEP Science Network came together to share a CPD opportunity and will be launching the CEP Science Essay Prize this month. Our Librarian Network is busy looking into innovative ways to promote reading across all schools and there is strong interest from Heads of Music to form a Cheltenham-wide music ensemble. We look forward to seeing how these staff collaborations grow with more opportunities for CPD and subject focused activities that engage students across the partnership's schools.

CYBER HUB

CEP MUSIC NETWORK

Despite restrictions preventing students coming together in person, our Latin students continue to grow their skills and the Manifesto for Change series provides students with a platform to express their views on education with students from other schools. May we also thank schools who have been able to open up virtual events and shared services with the CEP, e.g. the All Saints' Academy Careers festival, Dean Close Voces8 Concert, Cleeve School Cyber Hub, cross-school mock interviews for Oxbridge...

CEP WEBSITE LAUNCH

The CEP Coordinator has been meeting with a number of local organisations who have shown great interest in collaborating with the CEP through offering opportunities that support our mission to help Cheltenham's young people realise their full potential. Plans are being made for representatives from these organisations to be introduced to the CEP Operations Group this term.

CONTACT:

Email: ebuirski@glos.ac.uk
 Twitter: @CheltEduPart
 Instagram: @CheltenhamEducationPartnership

We look ahead to 2021 with optimism and intrigue as to how the COVID-19 pandemic will change the face of education, work habits and lifestyles choices. Where will students take us as we dive deeper into conversations focused around education as part of our Manifesto for Change series?

This month we will be launching the CEP website. This milestone in the establishment of the CEP will provide a platform from which people can learn more about the partnership, the opportunities available and the work we are doing to support our young community.

VOCES8 CONCERT AND Q&A 26 January, 7:00pm - 8:30pm

Join world-renowned vocal ensemble [VOCES8](#) in a private concert and Q&A session streamed live to your home.

VOCES8 will take students on an aural tour through six centuries of choral music from early Renaissance polyphony to newly commissioned works. Following the concert, the singers will answer students' questions, submitted via an online chat feature.

The event is open to students at school in Gloucestershire, and will be particularly suitable for Secondary age students (KS3 - 5) studying music, or who sing in a choir. Interested parents and teachers are also welcome to attend.

Dean Close Music Department will securely collate contact details for attendees and will email a link with login-in details on the morning of the event.

To book a place, or to find out more please email: shklemz@deanclose.org.uk





CYBER HUB
13 JAN '21
3:45 - 4:45

CEP STAFF NETWORK

CYBER HUB


Wednesday 13th January, 3:45pm – 4:45pm

Microsoft Teams Meeting

Martin Peake (Cleeve School) is sharing this excellent networking opportunity for teachers to find out about the Cyber Hub Centre at Cleeve School, plus the resources and support which are available. The meeting will cover:

- Cyber opportunities continuing during Covid-19
- Engaging students hands-off with Immersive Labs
- CyberHub equipment available to borrow free of charge curtesy of Cleeve School

To register please contact Emily at: ebuirski@glos.ac.uk



CEP MUSIC CDP

Cheltenham Education Partnership

STAFF NETWORK

CEP MUSIC NETWORK

Tuesday 12^h January, 4pm

Microsoft Teams Meeting

Heads of Music from across CEP schools will be joining to share their experiences of teaching during the Covid-19 pandemic and discuss opportunities for future collaboration.

Chair: Jason Hagget

For more information contact your CEP Champion or email: ebuirski@glos.ac.uk

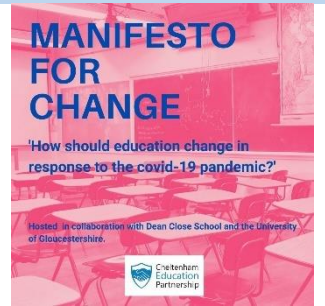
MANIFESTO FOR CHANGE

Tuesday 26^h January, 3:35pm (*date/time subject to change following recent Government COVID-19 announcements delaying students return to school*)

Zoom Meeting

Students from across CEP participating schools will come together virtually for the second meeting in the series.

Please contact Emily with any questions at: ebuirski@glos.ac.uk



MANIFESTO FOR CHANGE

'How should education change in response to the covid-19 pandemic?'

Hosted in collaboration with Dean Close School and the University of Gloucestershire.

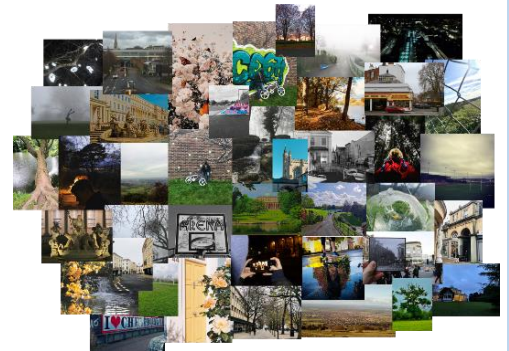
CEP PHOTOGRAPHY COMPETITION

'CHELTENHAM THROUGH THE EYES OF A TEENAGER'

Thank you to all our talented students who have participated in this competition. We have received excellent entries from across all CEP schools.

The competition will be judged by the 'Head of the School of Arts' and the 'Photography Academic Subject Leader' from the University of Gloucestershire on 11th January. With a display of such talent it is going to be tough choosing the winning entries!

The winner and two runners-up will be announced the third week of January, when the CEP website will go live, displaying their work.




Cheltenham Education Partnership

Fostering Social cohesion in Cheltenham

CEP WEBSITE LAUNCH

Tuesday 19 January

We are excited to be nearing the launch date of the new CEP website. Keep your eyes peeled for further announcements!

CEP FULL PARTNERS: The Cheltenham Education Partnership is an association of state and independent secondary schools in Cheltenham.

Schools currently in the CEP include (in alphabetical order): All Saints Academy, Balcarras School, Cheltenham Bournside School, Cheltenham College, Cheltenham Ladies College, Cleeve School, Dean Close School, Pittville School, St. Edwards' School, Winchcombe School, University of Gloucestershire.



CEP SUPPORTING PARTNERS: Local organisations supporting CEP activities include: Cheltenham Borough Council, Christian Arts Festivals, Cheltenham Festivals, The Cheltenham Trust, Diocese of Gloucester, Gloucestershire County Council, National Cyber Security Centre.

